

MESTA PARK NEIGHBORHOOD ASSOCIATION NEWSLETTER

News and information for ALL residents of the Mesta Park Historic Preservation District



OFFICERS:

President, Lindsey McCarty
Vice-President, Julie Watson
Secretary, Beth Wilson
Treasurer, David Carlson

COMMITTEE CHAIRS:

Historic Preservation, Joe Earley
Home Tour, Vacant
Lighting & Signs, Jackie Arnold
Membership, Lindsey McCarty
Mesta Festa, David Carlson
Newsletter Editor, Laura Jergensen
Parks, JB Schuelein
Security, Vacant
Social Events, Holly Jarolim

Contact:

Chairs@MestaPark.org
OfficersandBoard@MestaPark.org

The MPNA Newsletter is published six times per year (bimonthly) by the MPNA.

Neighborhood meetings, board meetings or social events occur monthly.

GET PROUD!

HOLIDAY DECORATION AWARDS

by Amanda Jones

Thank you so much to everyone who participated in the Inaugural Mesta Park Holiday Decorating Contest! It was a great success that raised over \$400 to help fund the ongoing street light restoration. We love our neighborhood's enthusiasm and are so grateful for your willingness to participate in what we hope becomes a beloved holiday tradition. Thank you, again, to all who entered, as well as our judges, Jade Urash, Kay Floyd and Karen Black.

The winners in each category are as follows:

Griswold Award:
927 NW 16th St

North Pole Award:
700 Block of 18th

Best Character Use:
806 NW 20th St.

Traditional:
801 NW 17th St

Runner Ups:

Griswold Award
521 NW 16th St

Best Character Use
810 NW 20th St

Traditional
930 NW 17th St

North Pole Award
900 Block of 16th

We hope everyone had a wonderful holiday season!

GET INVOLVED!

OPEN CALL: MESTA FESTA, HOME TOUR, AND VOLLEYBALL TOURNAMENT HELP WANTED!

By Lindsey McCarty

As we kick off a new year in Mesta Park, we are beginning to put together committees for our large events. Not only have these weekends become beloved community traditions, but the bulk of MPNA funds are raised in these few days of the year. Funds are used to keep Mesta Park looking great, maintain our unique neighborhood lights, support community organizations like Wilson Elementary, and much more.

The planning and execution of these events require help from many volunteers; if you are interested in learning more about Mesta Festa (September), the annual home tour (December), or the annual volleyball tournament (May), please e-mail president@mestapark.org and we will let you know when and how to get involved. Informal info sessions will be held in the first quarter of 2022.

We look forward to serving with you!

MESTA PARK BUSINESS PAGE

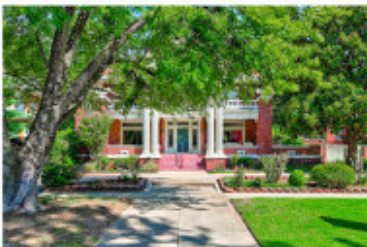
Sold in Mesta Park in 2020



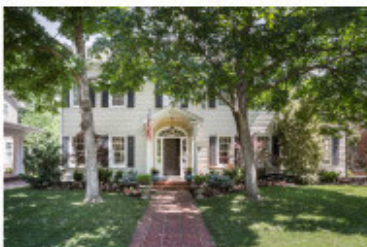
214 NW 18th St
2490 square feet
3 bed
2 bath



900 NW 19th St
4646 square feet
5 bed
3 bath



919 NW 17th St
4191 square feet
3 bed
2 bath



409 NW 21st St
3130 square feet
3 bed
2 bath

Your luxury home expert by experience.

Newsweek

NAMED JOY BARESEL ONE OF THE
TOP REALTORS TO WORK
WITH IN OKLAHOMA FOR 2020

We have a list of buyers hoping to move into Mesta Park.
If you are thinking of selling, please text or call 405.826.7465

Joy Baresel, Owner, President, and Real Estate Advisor
Alex Knoll, Buyer Specialist
Amber Graham, Buyer Specialist
Valerie Traynor, Buyer Specialist



ENGEL & VÖLKERS

#1 selling real estate advisor in Mesta Park in 2020



GET INVOLVED!

Dear Neighbor,

Mesta Park is a wonderful neighborhood to live in, but WE CANNOT DO IT WITHOUT YOUR SUPPORT! To help our neighborhood continue to thrive, we need your voice and input to share ideas about how we can continue to improve the beautiful neighborhood that we all call home.

The MPNA membership system aligns with the calendar year to make it easier for our members to keep up with their renewals. Members who join now or anytime in the new year will remain current through December 2022.

Where do my dues go?

- Contribute to the preservation and enhancement of our neighborhood and local organizations (for example, dues funded volleyball court improvements and sprinkler system installations in 2020)
- Enable the continuation of signature community events like Mesta Festa and the Mesta Park Home Tour
- Provide each member household with one vote at our annual meeting to elect our Board of Directors

How much does membership cost?

\$60 annually

Who is eligible to be a member?

All residents of Mesta Park

Where do I join or renew?

Using mail-in form on page 8 of this newsletter, or online with a credit/debit card (www.mestapark.org/membership)

THANK YOU to those who renew their membership year after year! If you are not a member: please consider joining the Mesta Park Neighborhood Association. Dues are just \$60 per household each year and help keep Mesta Park one of the most sought-after residential areas in Oklahoma City. To join or renew, simply return the form on page 8 or register and pay online at www.mestapark.org/membership.

MPNA activities & efforts:

- Easter egg hunt (annually around Easter)
- Picnic & election of officers/directors (annually in June)
- Ice cream social (annually each summer)
- Ongoing support to important local organizations
- Mesta Festa (annually in September)
- Mesta Park Home Tour (annually in December)
- Maintain and improve park and medians

Visit our website (www.mestapark.org) for more information about Mesta Park, upcoming events, and our bi-monthly newsletter. Questions? E-mail us at www.mestapark.org/contact.

GET COMPLIANT!

MESTA PARK'S PRESERVATION REVIEW COMMITTEE SEEKS VOLUNTEERS

by Anne Zachritz

As an historic preservation neighborhood, Mesta Park has a neighborhood preservation review committee (PRC) and we are looking for new members. The purpose of the PRC is to provide guidance and to answer questions for homeowners regarding their project applications as well as to review applications for Certificates of Appropriateness which have been submitted to the Planning Department by homeowners or their representatives. The PRC reviews each application, supporting documents and the Staff Report and recommendations on each application and provides opinions to the Planning Department staff and the applicants, which is shared with the Historic Preservation Commission members prior to each Commission meeting. The PRC Chair also acts as a spokesperson regarding Historic Preservation matters.

The PRC meets virtually for 1-2 hours once monthly on the weekend before each scheduled meeting of the Historic Preservation Commission meetings, which are held the first Wednesday of each month (generally). If you have an interest in getting involved, please email Anne Zachritz at aezachritz@outlook.com.

MESTA PARK BUSINESS PAGE



Lori M. LoVette, DDS
1211 N. Shartel, Suite 1002 OKC
405-525-5555
Drlorilovette.com

You could be, too!

Advertise in the
Mesta Park Newsletter!
Email
newsletter@mestapark.org



MODERN ENVIRONMENT

DESIGN - INSTALLATION - MAINTENANCE

OKLAHOMA CITY, OKLAHOMA - CRESTED BUTTE, COLORADO

405-601-5001

970-825-3713

MODERNSCAPES.CO

MAKING SPIRITS BRIGHT

SANTA CLAUS VISITS MESTA PARK AND HERITAGE HILLS

by Amy Dalebroux

Holiday cheer was in abundant supply on Sunday, December 12, when Santa Claus rolled into town for a neighborhood visit. Kids and adults alike came out see the jolly bearded man in his bright red suit.

Many thanks to the Mesta Park and Heritage Hills Neighborhood Associations for sponsoring the event, and a HUGE thank you to Dean and Amy Sergent for chauffeuring Santa around neighborhood and to Kim and Suzette Hatfield for sharing their Santa-mobile. Thanks, also, to Erin Sullivan and Katie Huskerson for helping with décor.

We hope residents enjoyed this sweet kick-off to the holiday season!



Thank you!



FRIENDS OF MESTA PARK,
**WE APPRECIATE
 YOUR SUPPORT**

PLEASE CONSIDER A DONATION
 TO HELP US CONTINUE TO
 GATHER & MAINTAIN OUR BEAUTIFUL PARK

EVERY LITTLE BIT HELPS!

[MESTAPARK.ORG/DONATE](https://mestapark.org/donate)



MESTA PARK BUSINESS PAGE



WENDY CHONG

#1 Oklahoma RE/MAX REALTOR® 2009, 2011, 2012, 2016, 2017
 Certified Home Luxury Marketing Specialist | 405.209.3880
 wendywchong@gmail.com | www.WendyChong.com

 @wendychongrealtor  @wendyrealtorokc



Thinking of selling?
 Let's get you top-of-market pricing.

We'll handle all of the details, from staging to multi-platform marketing.

It's easier than you think. Call us.



View our current real estate listings at verbode.com or call for consultation.

405.757.7001 + verbode.com

  @verbode



Mesta Park Neighborhood Association
 P. O. Box 61095
 Oklahoma City, OK 73146-1095
 www.mestapark.org

NON-PROFIT ORG
 US POSTAGE
PAID
 OKLAHOMA CITY, OK
 PERMIT NO.1657

Bimonthly Neighborhood Newsletter

Your neighborhood needs you!

Join the Mesta Park Neighborhood Association today.

MPNA MEMBERSHIP FORM January 2022 - December 2022

Yes! I'd like to join or renew my MPNA membership for 2021.

All donations are tax deductible!

\$60 check enclosed for my 2021 membership Name(s): _____

I would also like to donate \$_____ to help Address: _____
 maintain Perle Mesta Park and Shartel Blvd.
 (mowing, seasonal leaf removal, tree trimming) Phone: _____

I would like to volunteer! Please contact me. E-Mail: _____

Please make all checks payable to MPNA
 Mesta Park Neighborhood Association
 PO Box 61095
 Oklahoma City, OK 73146

Please send me bi-monthly newsletter
 distributions using this e-mail address

**Your personal information is strictly for internal
 MPNA use and will never be sold or shared externally*



Or join online at www.mestapark.org/membership/