

# MESTA PARK NEIGHBORHOOD ASSOCIATION NEWSLETTER

News and information for ALL residents of the Mesta Park Historic Preservation District



## OFFICERS:

President, Lindsey McCarty  
Vice-President, Julie Watson  
Secretary, Beth Wilson  
Treasurer, David Carlson

## COMMITTEE CHAIRS:

Historic Preservation, Joe Earley  
Home Tour, Vacant  
Lighting & Signs, Jackie Arnold  
Membership, Lindsey McCarty  
Mesta Festa, David Carlson  
Newsletter Editor, Laura Jergensen  
Parks, JB Schuelein  
Security, Vacant  
Social Events, Holly Jarolim

Contact:

Chairs@MestaPark.org  
OfficersandBoard@MestaPark.org

The MPNA Newsletter is published six times per year (bimonthly) by the MPNA.

Neighborhood meetings, board meetings or social events occur monthly.

**Find Dates to Remember on page 4 of this issue!**

## GET INVOLVED!

### SUMMER EVENTS - SAVE THE DATES!

by Holly Jarolim

Neighbors, mark your calendars and 'Save the Dates' for our next two Summer events coming up in August!

Our Annual Ice Cream Social will be **Tuesday, August 10th, at Perle Mesta Park at 7PM**. This is always such a fun way to beat the August heat and celebrate the beginning of the school year for the kiddos.

We will also be having our second joint **Movie Night with Heritage Hills at the Overholser Mansion on Saturday evening, August 28th**. Let's celebrate the end of Summer with our next-door neighborhood the best way we know how—with food, drinks, movies, and games!

More details to come on both of these events. Keep your eyes on Mesta Park social media (@MestaPark) and keep a lookout for a flyer as well. We look forward to gathering together for these exciting events!

### 2021 MESTA FESTA - SAVE THE DATE!

by David Carlson

Mark your calendars! Mesta Festa is returning to Perle Mesta Park this Fall. Our annual Mesta Festa fundraiser will be held **live and in-person, Sunday, Sept. 26th from Noon – 6pm**.

Continue to watch our social media pages and upcoming newsletters for additional details. We can't wait to see everyone in September!



# GET INVOLVED!

## MESTA PARK VOLLEYBALL

by JB Schuelein

Perle Mesta Park hosted its first sand volleyball tournament May 22-24. Organized by Lindsey McCarty, Andy Burnett and JB Schuelein, the event was a great success and raised several thousand dollars for maintenance of the park. Despite forecasts for heavy rain, the tournament proceeded without interruption – as participants played through persistent periods of light rain and a few heavy showers.

The tournament included competition in two divisions – Men’s 3x3 and Co-ed 4x4. Organizers hope to repeat the event in the Fall – possibly on the weekend of Mesta Festa, September 26.

In addition to volleyball, the event featured a variety of food trucks all weekend – and beer provided by tournament sponsor Vanessa House Beer Company.

Winners of the Men’s 3x3 competition were Andy Burnett, OKC. and Justin Wilson and David Burnett of Edmond.

Winners of the Co-ed division were: David and Lindsey Burnett and Cam and Keri Clifford of Edmond.

Thanks to sponsors of the event: Chris George Homes, Rad City, Burnett Equity, Vanessa House Beer Company, Oklahoma Shirt Company and Dental 32. Their support is sincerely appreciated.



Co-ed 4x4 Winners, L to R: Cam and Keri Clifford and Lindsey and David Burnett



Men's 3x3 Winners, L to R: Justin Wilson, Andy Burnett, and David Burnett



OKLAHOMA SHIRT COMPANY

Burnett Equity



# MESTA PARK BUSINESS PAGE

Sold in Mesta Park in 2020



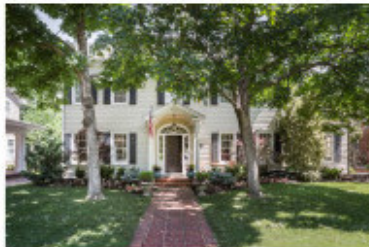
214 NW 18th St  
2490 square feet  
3 bed  
2 bath



900 NW 19th St  
4646 square feet  
5 bed  
3 bath



919 NW 17th St  
4191 square feet  
3 bed  
2 bath



409 NW 21st St  
3130 square feet  
3 bed  
2 bath

Your luxury home expert by experience.

## Newsweek

NAMED JOY BARESEL ONE OF THE  
TOP REALTORS TO WORK  
WITH IN OKLAHOMA FOR 2020

We have a list of buyers hoping to move into Mesta Park.  
If you are thinking of selling, please text or call 405.826.7465

Joy Baresel, Owner, President, and Real Estate Advisor  
Alex Knoll, Buyer Specialist  
Amber Graham, Buyer Specialist  
Valerie Traynor, Buyer Specialist



**ENGEL & VÖLKERS**

#1 selling real estate advisor in Mesta Park in 2020



**REFLECTIONS**  
DENTAL CARE

*Wide*  
**open**

OUR SECOND LOCATION IS  
**NOW WELCOMING  
NEW PATIENTS!**



1108 NW 16th, OKC



MARIE BOCKUS, DDS  
LANCE R SCHMIDT, DDS  
KIMBERLY GREENLEE, DDS

*Our commitment is to put you in control  
of your comfort, health, and happiness.*



OUR TEAM OF THREE DENTISTS OFTEN WORK TOGETHER,  
along with our large support staff, to provide the best  
expertise and treatment possible. Teamwork is the secret to  
making your experience comfortable, painless, and even  
life-changing.

**Schedule online or request an appointment today!**

ReflectionsDentalCare.com | (405) 751-4556

# MESTA PARK BUSINESS PAGE



**Lori M. LoVette, DDS**  
 1211 N. Shartel, Suite 1002 OKC  
 405-525-5555  
 DrLorilovette.com

*You could be, too!*

**KILROY WAS HERE!**

Advertise in the  
 Mesta Park Newsletter!  
 Email  
[newsletter@mestapark.org](mailto:newsletter@mestapark.org)

# MODERN ENVIRONMENT

DESIGN - INSTALLATION - MAINTENANCE

OKLAHOMA CITY, OKLAHOMA - CRESTED BUTTE, COLORADO  
 405-601-5001 970-825-3713

**MODERNSCAPES.CO**

## Dates to Remember

### ICE CREAM SOCIAL

Tuesday, August 10  
 7pm  
 Perle Mesta Park

### MOVIE NIGHT

with **HERITAGE HILLS**  
 Saturday, August 28  
 Overholser Mansion

### 2021 MESTA FESTA

*Live and In-Person!*  
 Sunday, September 26  
 noon- 6pm  
 Perle Mesta Park

Watch Mesta Park social media for more details to come on all these events!

# MESTA PARK BUSINESS PAGE



## WENDY CHONG

#1 Oklahoma RE/MAX REALTOR® 2009, 2011, 2012, 2016, 2017  
 Certified Home Luxury Marketing Specialist | 405.209.3880  
 wendywchong@gmail.com | www.WendyChong.com

@wendychongrealtor @wendyrealtorokc



1018 NW 17th Street    4 bed | 3.5 bath | 3,695 sqft

Our daily routines and environments are changing. You may find yourself spending more time at home thinking about a new approach, and your real estate company should too. At Verbode, we closely monitor the pulse of the housing market to find opportunities that benefit our clients.

	DAYS ON MARKET		AVG PRICE		AVG PRICE PER SQ FT		HIGH PRICE		HIGH PRICE PER SQ FT	
	2019/20	2018/19	2019/20	2018/19	2019/20	2018/19	2019/20	2018/19	2019/20	2018/19
Mesta Park Market Report	60	38	\$382,010	\$443,958	181.95	197.88	\$660,000	\$925,000	283.39	330.26

Source: Copyright 2020 MLSCK, Inc. We do not attempt to verify the currency, completeness, accuracy or authenticity of the data contained herein. Information is subject to verification by all parties and is subject to transcription and transmission errors. All information is provided "as is". The listing information provided is for consumers' personal, non-commercial use and may not be used for any purpose other than to identify prospective purchasers. This data is copyrighted and may not be transmitted, retransmitted, copied, frames, repurposed or altered in any way for any other site, individual and/or purpose without the express written permission of MLSCK, Inc. Information last updated in July 2020. Data includes August 1 2018-July 31 2019 compared to August 1 2019-July 31 2020.



View our current real estate listings at [verbode.com](http://verbode.com) or call for consultation.  
 Our Oklahoma City office is temporarily closed to support social distancing.

405.757.7001  
[verbodegroup.com](http://verbodegroup.com)  
 @verbodegroup  
 @verbode

# GET INVOLVED!

**Dear Neighbor,**

Mesta Park is a wonderful neighborhood to live in, but WE CANNOT DO IT WITHOUT YOUR SUPPORT! To help our neighborhood continue to thrive, we need your voice and input to share ideas about how we can continue to improve the beautiful neighborhood that we all call home.

Beginning in 2021, the MPNA membership system changed to align with the calendar year to make it easier for our members to keep up with their renewals. Current members who joined/renewed in July 2020 or later will automatically remain current through December 2021.

## **Where do my dues go?**

- Contribute to the preservation and enhancement of our neighborhood and local organizations (for example, dues funded volleyball court improvements and sprinkler system installations in 2020)
- Enable the continuation of signature community events like Mesta Festa and the Mesta Park Home Tour
- Provide each member household with one vote at our annual meeting to elect our Board of Directors

## **How much does membership cost?**

\$60 annually

## **Who is eligible to be a member?**

All residents of Mesta Park

## **Where do I join or renew?**

Using mail-in form on page 8 of this newsletter, or online with a credit/debit card ([www.mestapark.org/membership](http://www.mestapark.org/membership))

THANK YOU to those who renew their membership year after year! If you are not a member: please consider joining the Mesta Park Neighborhood Association. Dues are just \$60 per household each year and help keep Mesta Park one of the most sought-after residential areas in Oklahoma City. To join or renew, simply return the form on page 8 or register and pay online at [www.mestapark.org/membership](http://www.mestapark.org/membership).

## **MPNA activities & efforts:**

- Easter egg hunt (annually around Easter)
- Picnic & election of officers/directors (annually in June)
- Ice cream social (annually each summer)
- Ongoing support to important local organizations
- Mesta Festa (annually in September)
- Mesta Park Home Tour (annually in December)
- Maintain and improve park and medians

Visit our website ([www.mestapark.org](http://www.mestapark.org)) for more information about Mesta Park, upcoming events, and our bi-monthly newsletter. Questions? E-mail us at [www.mestapark.org/contact](mailto:www.mestapark.org/contact).

# GET INVOLVED!



## HISTORIC NEIGHBORHOODS SECURITY ASSOCIATION

## NEIGHBORHOODS SECURITY SERVICES FOR HERITAGE HILLS & MESTA PARK COMMUNITIES



# HISTORIC NEIGHBORHOODS SECURITY ASSOCIATION

HNSA is a non-profit corporation formed by the Heritage Hills and Mesta Park Neighborhoods.

### THE AREA COVERED IS 13TH ST. TO 23RD ST., BROADWAY TO CLASSEN.

The Association hires off duty uniformed OKC police officers to patrol the neighborhoods in an Association owned vehicle for as many hours per day as funds will allow, *currently 17 on average.*

The officers are immediately available via an Association owned cell phone. They, in turn, have immediate access to the OKC police department.

The patrol gives priority to member residences. Members can integrate the patrol with any home cameras by calling the patrol for an immediate response upon seeing any suspicious activity, porch package theft, house or car break in.

Members may also notify the patrol administrator (NSC) of any travel plans and ask for a "house check" while you are away. An officer will walk the perimeter of the home daily and retrieve mail and packages to be brought back upon your return.

Also, if you have a package delivery occur while at work and can't get to it, you may call the patrol and ask the officer to put it at the back door until you get home.

It is clear that the HNSA patrol is a deterrent to crime in our neighborhoods. And that deterrence is critical to the safety and security of our streets, sidewalks and homes, and by extension, our property values. But we need more participation to maintain and grow it to 24 hours per day, 7 days per week.

Membership is \$480 per year. It can be paid with one annual payment by check or credit card. (Current year will be prorated.) Or \$40 can be paid monthly with an EFT from your bank account. Or \$40 by credit card monthly. All billing and payment receipt is handled by Neighborhood Services Corp. in Edmond

Enroll today by calling or e-mailing **Melody Poor, Neighborhood Services Corp., 348-1436, [MelodyP@neighborhoodsplus.com](mailto:MelodyP@neighborhoodsplus.com)**

Upon enrollment you will receive cards and stickers with the patrol number, a yard sign, and car decals. Please join us. Your membership is an important participation in the neighborhood.



Mesta Park Neighborhood Association  
 P. O. Box 61095  
 Oklahoma City, OK 73146-1095  
 www.mestapark.org

NON-PROFIT ORG  
 US POSTAGE  
**PAID**  
 OKLAHOMA CITY, OK  
 PERMIT NO.1657

# Bimonthly Neighborhood Newsletter

**Your neighborhood needs you!**

Join the Mesta Park Neighborhood Association today.

## MPNA MEMBERSHIP FORM January 2021 - December 2021

**Yes! I'd like to join or renew my MPNA membership for 2021.**

*All donations are tax deductible!*

\$60 check enclosed for my 2021 membership      Name(s): \_\_\_\_\_

I would also like to donate \$\_\_\_\_\_ to help      Address: \_\_\_\_\_  
 maintain Perle Mesta Park and Shartel Blvd.  
 (mowing, seasonal leaf removal, tree trimming)      Phone: \_\_\_\_\_

I would like to volunteer! Please contact me.      E-Mail: \_\_\_\_\_

Please make all checks payable to MPNA  
 Mesta Park Neighborhood Association  
 PO Box 61095  
 Oklahoma City, OK 73146

Please send me bi-monthly newsletter  
 distributions using this e-mail address



*\*Your personal information is strictly for internal  
 MPNA use and will never be sold or shared externally*

Or join online at [www.mestapark.org/membership/](http://www.mestapark.org/membership/)